

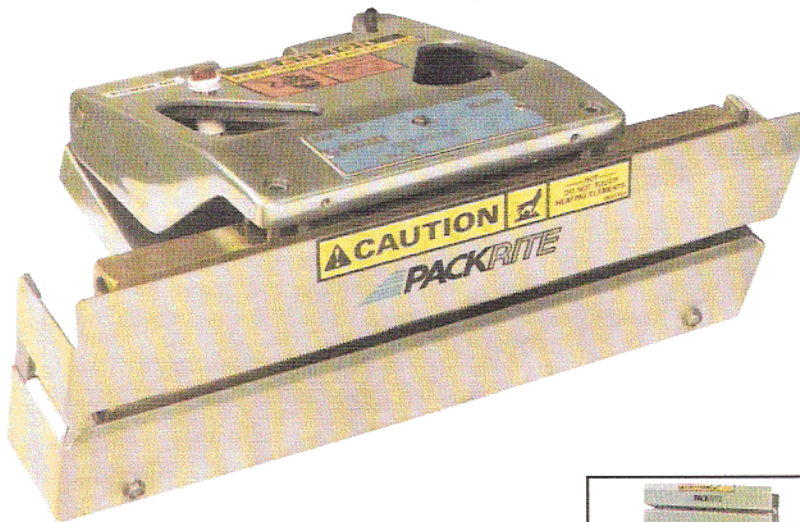
THERMO SEALER

The PackRite Thermo-Jaw Sealer is an economical, easy-to-use jaw-type sealer operated by foot-pedal. Heavy-duty heating elements and half brass sealing bars in the upper and lower jaws provide uniform and sufficient penetration to achieve a high quality, airtight seal. The machine's adjustable thermostat permits accurate temperature control, further assuring superior seal integrity.

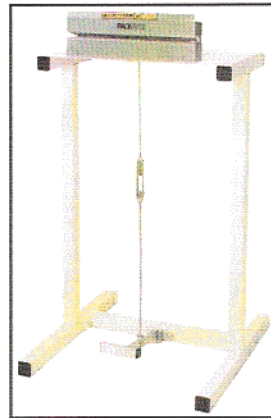
The sealer is designed for use on a wide variety of heat-sealable materials, including cellophane, polycel, glassine, laminates, overcap labels, polypropylene, krafts, foils and even MIL Spec materials.

Constructed of the highest quality materials, the Thermo Jaw Sealer is made to withstand continuous usage, day after day. Its design simplicity allows it to be mounted either flat, or in optional incline and vertical positions. The simple design also means that maintenance requirements are minimal.

Users of the machine will really appreciate its easy operation. An adjustable foot-pedal assembly comes standard with the sealer for improved operator comfort. Stainless steel finger guards built to OSHA specs add to the machine's safety features.



Vertical Crimp. The 3/4"-wide, 16 vertical-serrations-per-inch seal provides an attractive sealing impression on cellophane and light materials.



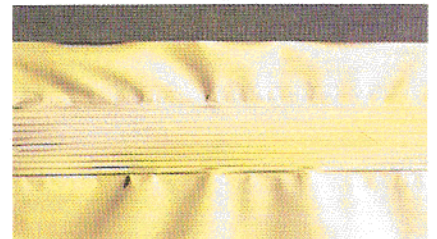
Optional Stand is available. All necessary mounting hardware, brackets, foot-pedal, and foot-pedal guard are standard with the Thermo Jaw Sealer.

Embossed Code Dating. On all three types of seals, optional embossed code dating can be added.

Three Sealing Impressions (3/4" Wide)



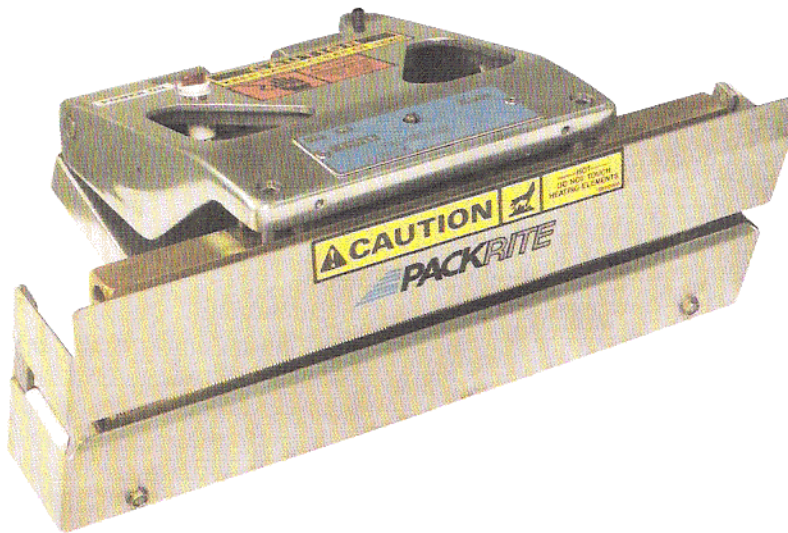
Flat Seal. Smooth, flat sealing bars are recommended for extra heat penetration on heavier materials such as laminates, overcap labels, and MIL Spec materials.



Horizontal Crimp. Attractive serrations run lengthwise across bars (12 serrations on a 3/4"-width)

SPECIFICATIONS

Standard	Half-brass sealing bars heated on top and bottom. Foot-pedal assembly.	Mounting	Flat-mount standard. (Other mountings available as options.)
Sealing Speed	Approximately 10 bags per minute, depending on operator.	Electrical	115 Volts, 60 cycles, 1-phase AC. (Options available.)
Sealing Capacity	Most heat-sealable barrier materials.	Shipping Weight	23 lbs.
Seal Impression	Flat, vertical crimp w/16 serrations per inch, and horizontal w/12 serrations running lengthwise.	Shipping Dimensions	16"L x 16"W x 6"L
Seal Width	3/4" standard. (Special widths quoted on request.)	OPTIONS (Up Charge)	<ul style="list-style-type: none"> • Universal Sealer Stand of Powder Coated (Almond) metal. • Embossed Code Dating Bars: 3 digit standard. (Special codes quoted on request.) • 1/4" Hole Punch. (Holes are not punched completely through so there's no scrap problem.) • Vertical or Incline Mounting. • Electrical: 220 Volts, 50/60 cycles, 1-phase AC.
Seal Length	12", 15" standard. (Shorter widths quoted on request.)		
Temperature Range	Adjustable from 200° through 550° F.		

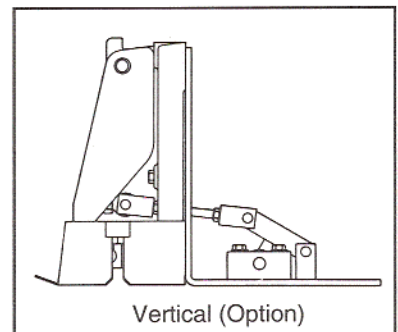
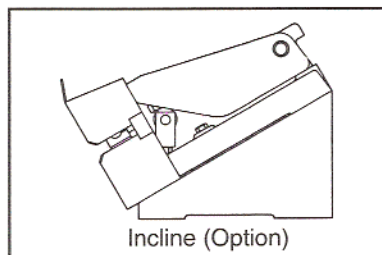
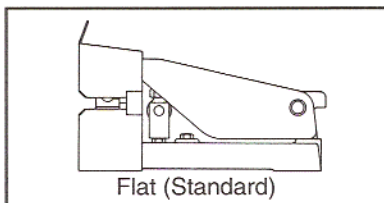


Two Heavy-Duty Heating Elements with two heated, half-brass sealing bars of 12" or 15", provide uniform heat and sufficient penetration of material.

Adjustable Thermostat controls temperature from 200°F through 500°F.

Stainless Steel Finger Guards built to OSHA specs, allow for safe handling of the bags being sealed.

Mounting Options



For quotation or more information, CALL 800-392-8569

PackRite

Molding Accessories • Packaging Machines

WEST COAST PLASTICS

EQUIPMENT, INC.

6122 W. Washington Blvd.
Culver City, CA 90232

323/870-7733 800/392-8569 Fax: 310/837-4947

* Teflon is a registered trademark of Dupont.